

PEARL EX

# 3-Tier Swing Earrings



by: syndee holt

*These dramatic earrings, created with Sculpey Soufflé™ and Jacquard Pearl Ex Powdered Pigments, are sure to garnish compliments. Pearl Ex will adhere right to the unbaked surface of the clay!*

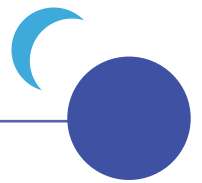


07.06.20

Pearl Ex 3-Tier Earrings\_ syndee holt

# Materials

- Jacquard Pearl Ex Powdered Pigments (695 Duo Aqua-Blue & 696 Duo Blue-Purple)
- Jacquard Pearl Ex Varnish
- Small paint brush
- Sculpey Soufflé™ Poppy Seed clay (1 package)
- Acrylic roller or clay dedicated pasta machine
- Sculpey® nested Circle Cutters
- Sculpey® nested Teardrop cutters
- Needle tool or toothpick
- Silver-toned 8 mm jump rings (4)
- Post earring backs (2)
- Gel-type instant glue



## Advance Prep

Please make sure your work area is covered and you are working on a protected surface. I recommend working on the Sculpey® Oven-Safe Work Mat, wax paper, metal baking sheet, or disposable foil. Uncured clay may damage unprotected furniture or finished surfaces. Be sure to cover your crafting area appropriately.

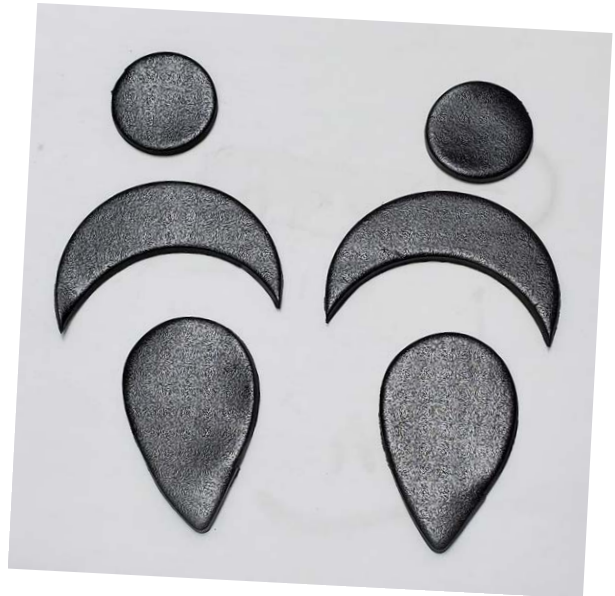
## Project Steps

STEP 1: Start with clean hands, unwrap and knead clay until soft and smooth, or condition by running clay through a Pasta Machine. I recommend using a designated machine for clay purposes only. When working with multiple colors, clean hands with soap and water or baby wipes (I have found that baby wipes work best) before switching colors. Shape clay, pressing pieces firmly together. Wash hands after use.



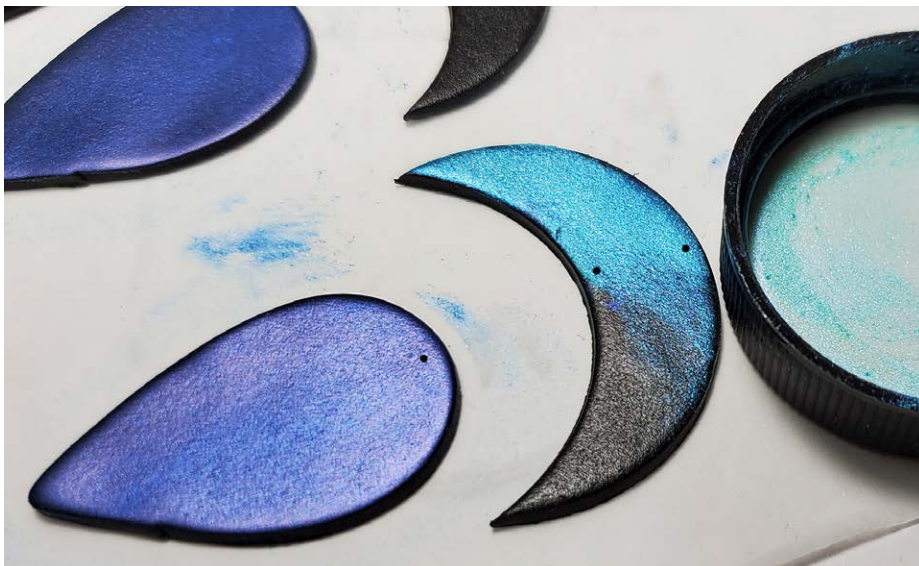
STEP 2: Roll the pack of conditioned Poppy Seed clay out on your work surface to about 1/8 inch (3 mm) thickness. If you are using a clay dedicated pasta machine, you can use the second to widest setting. Use the 1.75 inch (44 mm) round cutter to cut out two circles of clay. Slide the cutter down and cut again to create a crescent as shown (photo, left).

STEP 3: Cut out two of the large teardrops and use the ¾ inch (19 mm) cutter to cut out two circles (photos, left and below).



STEP 4: I prefer to use the Pearl Ex powder trapped on the lid and apply it with my fingertip. This way I don't get too much powder on my piece, and I can build up the density and color. Apply the Duo Blue-Purple to the teardrop shape. (photo, right) Then, apply the same color to the two small circles of clay.

*NOTE:* I always test my colors first on whatever color of clay that I've selected as it will change from clay color to clay color.



STEP 5: Apply the Duo Aqua-Blue to the crescent shapes. (photo, left) After applying the Pearl Ex to the clay piece, use the needle tool to create the holes for assembling.

*NOTE:* I find it easier to see the layout and balance after the Pearl Ex is applied.

STEP 6: Once all the pieces are colored with the Pearl Ex and the assembly holes have been created, bake/cure the pieces as follows:

- Preheat oven to 275 °F (130 °C).
- For best results, bake clay on an oven-proof surface such metal, aluminum foil, an index card or the Sculpey® Clay Mat.
- Bake at 275°F (130 °C) for 30 minutes per 1/4" (6 mm) thickness according to package directions.

*NOTES:*

Oven safe glass or ceramic surfaces are also acceptable for baking; however, please note that the baking times may take longer as the glass or ceramic surfaces take longer to heat up.

For best baking results, use an oven thermometer.

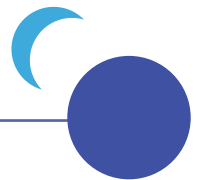
DO NOT use microwave oven. DO NOT exceed the above temperature or recommended baking time.



STEP 7: When the clay has been cured and cooled, use the small brush to apply a light coat of Pearl Ex Varnish to the clay.

Once the varnish has dried, use the jump rings and pliers to connect the pieces together. Don't glue the post backs onto the earrings until all the assembly and varnishing is complete.

Allow the glue to dry and enjoy your new earrings!



## About the Artist

syndee holt has had a crush on both polymer clay and Jacquard Products for over 25 years. Her work has been featured in over 90 magazine articles and she has made over 40 television appearances. She is currently a Sculpey Brand Ambassador and President of the San Diego Polymer Clay Guild. Instagram: syndeeholt / Blog: <https://synssculpeyblog.wordpress.com>. —

.....  
Jacquard Products | Rupert, Gibbon & Spider, Inc.  
P.O. Box 425, Healdsburg, CA 95448 | 800.442.0455 | Fax: 707.433.4906  
[www.jacquardproducts.com](http://www.jacquardproducts.com) | [service@jacquardproducts.com](mailto:service@jacquardproducts.com)